

XLella Size Chart

To order, replace the **HH** and **WW** in the code, with the appropriate size required.

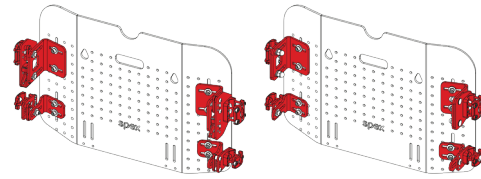
| Back Support Height (inches) | Wheelchair Width (inches) | | | | | |
|------------------------------|---------------------------|--------------------------|----|----|-------------------------------|----|
| | 20 | 22 | 24 | 26 | 28 | 30 |
| 12 | | XLella Vigour or Classic | | | | |
| 13 | | | | | | |
| 14 | | | | | | |
| 15 | | | | | | |
| 16 | | XLella Vigour or Classic | | | XLella ² Biangular | |
| 17 | | XLella Vigour or Classic | | | | |
| 18 | | | | | | |
| 19 | | | | | | |
| 20 | | XLella Vigour or Classic | | | | |
| 21 | | XLella Vigour or Classic | | | XLella ² Biangular | |
| 22 | | | | | | |
| 23 | | | | | | |
| 24 | | | | | | |
| 25 | | XLella Vigour or Classic | | | | |

XLella Vigour or Classic
 XLella² Biangular

Compatibility Chart

This chart outlines XLella compatibility with wheelchair sizes for each hardware option.

| Back Support Width (inches) | Compatible Wheelchair Width - XLella | | | | | |
|-----------------------------|--------------------------------------|----|----|----------------------|----|----|
| | Quick Release Hardware | | | Fixed Mount Hardware | | |
| 22 | 22 | 23 | 24 | 21 | 22 | 23 |
| 24 | 24 | 25 | 26 | 23 | 24 | 25 |
| 26 | 26 | 27 | 28 | 25 | 26 | 27 |
| 28 | 28 | 29 | 30 | 27 | 28 | 29 |



XLella Fitting

Actual size of the back support is larger than the nominal size. Nominal sizing is based on the wheelchair.

XLella back supports are designed to provide a comfortable support surface and protect the user from any hardware such as zips and the edges of the shell.



XLella Width

XLella back supports are 1" (25mm) wider than the nominal width.

E.g. 22"x16" Back Support is 23" wide.






XLella Height

XLella back supports are 0.5" (12mm) taller than the nominal height.

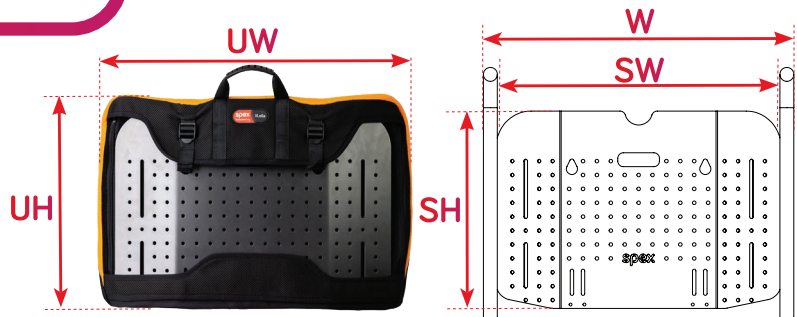
E.g. 22"x16" Back Support is 16.5" tall.



XLella Comparison Chart

| | XLella Vigour | XLella Classic | XLella [®] Biangular |
|--------------------------|---|--|--|
| |  |  |  |
| Padding Thickness | Moderate padding thickness. | Thicker padding for adjustments in the foam contouring layers. | Moderate padding thickness. |
| Adjustment | No contour adjustment. | Moderate contour adjustment using cube system. | Maximum contour adjustment using hinge profile curvature system. |
| Contouring | Mild contour for comfort. Will provide support for bariatric users without contouring needs. | Build up Spex positioning cubes to create contouring. Add padding to the top of the back support to relieve the gluteal region. Will provide a more complete adjustment range for more complex setups. | Provides adjustment through the lower section using the hardware to relieve the gluteal region. Will provide the most supportive solution for most bariatric users. |
| Scripting | Scripted by the back support height. | Scripted by the back support height. Contour the support surface by adding and removing foam cubes. | Scripted by the support surface length. Contour the support surface using the hardware adjustment. See the next page for script tools. |

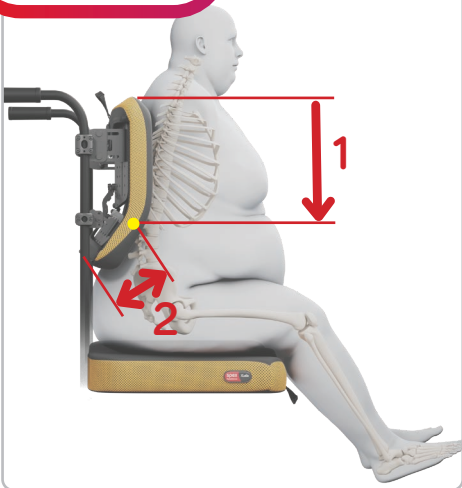
Vigour & Classic Size Guide



| XLella Vigour Code | XLella Classic Code | WC Width (W) | Back Support Height | Upholstery Height (UH) | Upholstery Width (UW) | Shell Width (SW) | Shell Height (SH) |
|--------------------|---------------------|--------------|---------------------|------------------------|-----------------------|------------------|-------------------|
| 1258-2212-00H | 1258-2212-OSS | 22" | 12" | 12.5" 320mm | 23" 585mm | 20" 510mm | 10" 255mm |
| 1258-2216-00H | 1258-2216-OSS | | 16" | 16.5" 420mm | 23" 585mm | 20" 510mm | 14" 355mm |
| 1258-2220-00H | 1258-2220-OSS | | 20" | 20.5" 520mm | 23" 585mm | 20" 510mm | 18" 455mm |
| 1258-2412-00H | 1258-2412-OSS | 24" | 12" | 12.5" 320mm | 25" 635mm | 22" 560mm | 10" 255mm |
| 1258-2416-00H | 1258-2416-OSS | | 16" | 16.5" 420mm | 25" 635mm | 22" 560mm | 14" 355mm |
| 1258-2420-00H | 1258-2420-OSS | | 20" | 20.5" 520mm | 25" 635mm | 22" 560mm | 18" 455mm |
| 1258-2612-00H | 1258-2612-OSS | 26" | 12" | 12.5" 320mm | 27" 685mm | 24" 610mm | 10" 255mm |
| 1258-2616-00H | 1258-2616-OSS | | 16" | 16.5" 420mm | 27" 685mm | 24" 610mm | 14" 355mm |
| 1258-2620-00H | 1258-2620-OSS | | 20" | 20.5" 520mm | 27" 685mm | 24" 610mm | 18" 455mm |
| 1258-2816-00H | 1258-2816-OSS | 28" | 16" | 16.5" 420mm | 29" 735mm | 26" 660mm | 14" 355mm |

* Minor discrepancies in the table are due to minor rounding of measurements

XLella²



Scripting XLella²

XLella² is scripted based off the support surface length. Contour the support surface using the hardware adjustment.

MEASURE FROM THE: Apex of the Lumbar Curve or Gluteal Shelf
TO THE: Bottom of the Scapula or Top of the Support Surface (1) ●

CHECK THE LOWER SECTION LENGTH (2)

SELECT XLELLA² SIZE

XLella² Size Guide



| XLella ² Code | WC Width (W) | Back Support Height | 1. Top Section Length | 2. Lower Section Length | Upholstery Height (UH) | Upholstery Width (UW) | Shell Width (S) |
|--------------------------|--------------|---------------------|-----------------------|-------------------------|------------------------|-----------------------|-----------------|
| 1258-2217-200 | 22" | 17" | 10.5" 270mm | 7" 175mm | 17.5" 445mm | 23" 585mm | 20" 510mm |
| 1258-2221-200 | | 21" | 14.5" 370mm | 7" 175mm | 21.5" 545mm | 23" 585mm | 20" 510mm |
| 1258-2225-200 | | 25" | 18.5" 470mm | 7" 175mm | 25.5" 645mm | 23" 585mm | 20" 510mm |
| 1258-2417-200 | 24" | 17" | 10.5" 270mm | 7" 175mm | 17.5" 445mm | 25" 635mm | 22" 560mm |
| 1258-2421-200 | | 21" | 14.5" 370mm | 7" 175mm | 21.5" 545mm | 25" 635mm | 22" 560mm |
| 1258-2425-200 | | 25" | 18.5" 470mm | 7" 175mm | 25.5" 645mm | 25" 635mm | 22" 560mm |
| 1258-2617-200 | 26" | 17" | 10.5" 270mm | 7" 175mm | 17.5" 445mm | 27" 685mm | 24" 610mm |
| 1258-2621-200 | | 21" | 14.5" 370mm | 7" 175mm | 21.5" 545mm | 27" 685mm | 24" 610mm |
| 1258-2625-200 | | 25" | 18.5" 470mm | 7" 175mm | 25.5" 645mm | 27" 685mm | 24" 610mm |
| 1258-2821-200 | 28" | 21" | 14.5" 370mm | 7" 175mm | 21.5" 545mm | 29" 735mm | 26" 660mm |

Note: When scripting XLella Back Supports, use a flexible measuring tape to follow the profile of the user's spine.

* Minor discrepancies in the table are due to minor rounding of measurements