

# SPEX CONSTRUCTA COVERS

SPEX CONSTRUCTA CUSHION (PICTURED)



A



B



C



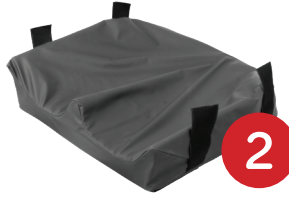
D



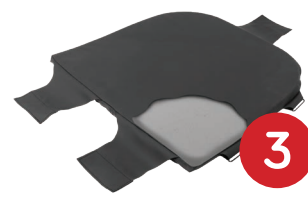
E



1



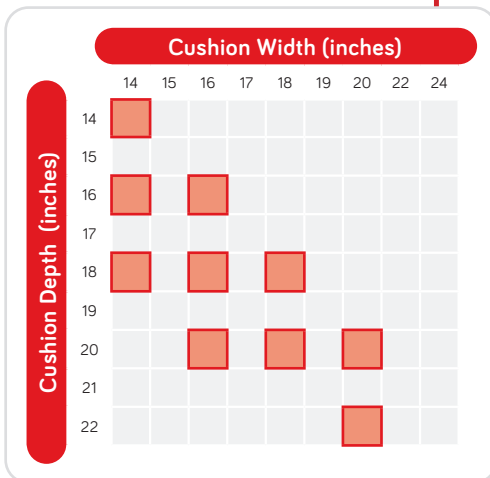
2



3

## BUILD CODE FOR SPEX CONSTRUCTA CUSHION COVER

1 1 0 2 - W W D D - X X X - X X



■ — SIZES AVAILABLE FOR SPEX CONSTRUCTA CUSHION

### STYLE

**A** CONSTRUCTA SHAPE  
XXXX-XXXX-0XX

**B** CONSTRUCTA FLEX  
XXXX-XXXX-FXX

### CONTOUR

**C** STANDARD OR HIGH  
XXXX-XXXX-X0C

**D** SUPERHIGH  
XXXX-XXXX-XSS

**E** ANY (INNER)  
XXXX-XXXX-X00

### COVER

**1** OUTER COVER  
XXXX-XXXX-XXX-CX

**2** SPARE INNER COVER  
XXXX-XXXX-X00-IX

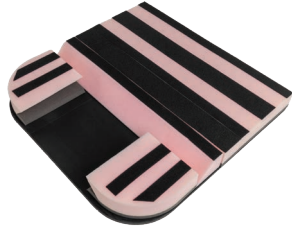
**3** SPARE OVERLAY  
XXXX-XXXX-XXX-FI

# SPEX CONSTRUCTA SPARE PARTS

## CONSTRUCTA SHAPE BASE

Specify cushion size - Width (WW) x Depth (DD) (inches)  
Quantity per cushion specified in red text

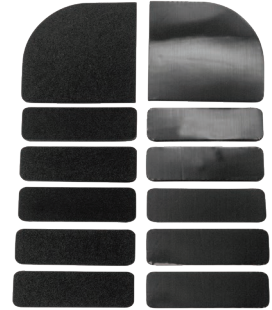
Constructa Shape Positioning Base  
1 Set



1102-WWDD-213



Strategic Positioning Kit  
1 Set



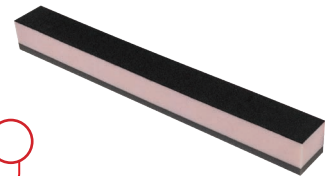
1102-WW 00-000

Constructa Shape Thigh Block  
1 Each



1102-WWDD-212

Constructa Shape 5cm Thigh Block  
1 Each



1102-WWDD-222

## CONSTRUCTA FLEX BASE

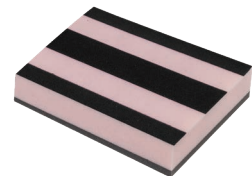
Insert values as relevant - Width (WW) x Depth (DD) (inches)  
Quantity per cushion specified in red text

Constructa Flex Rear Underpanel Pivot  
1 Each



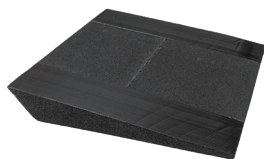
1102-WW 00-311

Constructa Flex Thigh Block  
2 Each



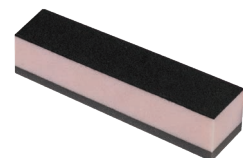
1102-WWDD-312

Constructa Flex Leg Wedge  
2 Each



1102-WWDD-321

Constructa Flex 5cm Thigh Block  
2 Each



1102-WW 00-322

Constructa Flex Leg with Positioning Blocks  
2 Set



1102-WWDD-323



Pelvic Adjustment Kit  
1 Set



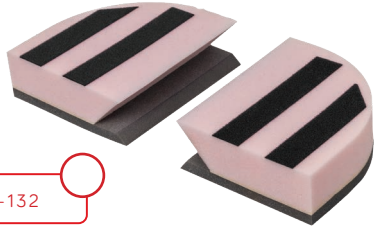
1102-WW 00-F00

# SPEX CONSTRUCTA SPARE PARTS CONTINUED

## POSITIONING BLOCKS

Insert values as relevant - Width (WW) x Depth (DD) (inches)  
Quantity per cushion specified in red text

Constructa Trochanter Blocks  
1 Pair



1102-00-132

Constructa Ischial Insert  
1 Each

**IMPORTANT:** 18" and 20" cushions use the same size ischial insert, please specify 20 in the code builder.



1102-00-142

## CONTOURS

Insert values as relevant - Width (WW) x Depth (DD) (inches)  
Quantity per cushion specified in red text

Constructa Standard Lateral Thigh Contours  
1 Pair



1102-00--11SC

Constructa High Lateral Thigh Contours  
1 Pair



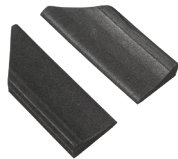
1102-00--11HC

Constructa Superhigh Lateral Thigh Contours  
1 Pair



1102-00--11SS

Constructa Standard Lateral Pelvic Contours  
1 Pair



1102-0000-12SC

Constructa High Lateral Pelvic Contours  
1 Pair



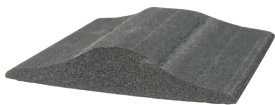
1102-0000-12HC

**IMPORTANT:**

14" and 16" cushions use the same size medial contour, please specify 16 in the code builder.

18" and 20" cushions use the same size medial contour, please specify 20 in the code builder.

Constructa Shape Standard Medial Contour  
1 Each



1102-00-23SC

Constructa Shape High Medial Contour  
1 Each



1102-00-23HC

Constructa Shape Superhigh Medial Contour  
1 Each



1102-00-23SS

Constructa Flex Standard Medial Contours  
1 Pair



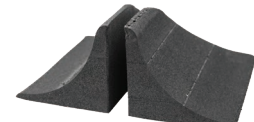
1102-00-33SC

Constructa Flex High Medial Contours  
1 Pair



1102-00-33HC

Constructa Flex Superhigh Medial Contours  
1 Pair



1102-00-33SS

Flexy Contour  
1 Each



1102-00-00F